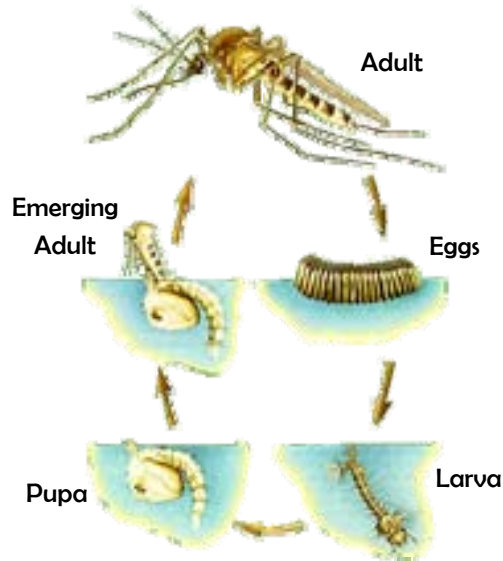


The Mosquito Life Cycle

[Left blank for local information]

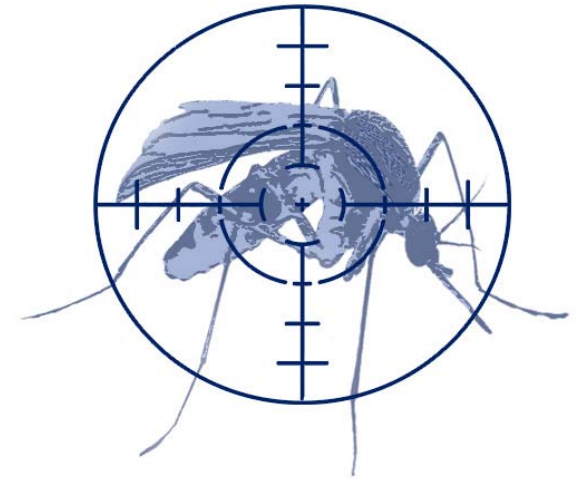


All mosquitoes have a life cycle that requires water. To complete their life cycle, they pass through four developmental stages: *egg*, *larva*, *pupa*, and *adult*.

The female mosquito lays her eggs on or near the water's edge. The eggs hatch into larvae which actively feed on decaying plants. Larvae then develop into pupae, which also live in the water, but do not feed. The pupa is mainly a resting stage in which the larva transforms into an adult. After the adult mosquito emerges from the pupal case, it rests for about a week to allow its 'skin' to harden. The females then fly off to seek a bloodmeal. After feeding, the female develops and lays between 100 and 300 eggs.

The amount of time it takes this cycle, from egg to adult mosquito varies with the mosquito species, temperature, humidity, rainfall and other climatic factors. This cycle may take from several weeks to months to complete.

Mosquito Problems?



Vector Disease Control, Inc.

Mosquito Control Program

800-413-4445

www.vdci.net

[custom logo

or

address]

For more information contact the:

[Local Contact Info]

What can you do?

- All standing water should be eliminated.
- Dispose of all useless containers and those that are saved should be turned upside down.
- Tires, especially, can readily breed thousands of mosquitoes.
- Recycling containers should have holes drilled into their bottom to allow for drainage of rainwater or tight-fitting lids.
- Roof gutters and drainage ditches should be maintained and cleared of debris.
- Fish will readily eat mosquitoes and, therefore, should be placed in ornamental ponds.
- The water in bird baths, fountains, and troughs should be changed weekly.
- Swimming pools and wading pools should be kept emptied when not in use and covered so that water cannot collect in them (or the cover).
- Canoes and other boats should be covered or turned over for storage.
- Properly grade property and smooth out tire ruts
- Use insect repellent DEET (20-30%, adults), Picaridin or Oil of Lemon Eucalyptus. Make sure you follow label directions!
- For additional protection, treat your clothing with repellent.
- Limit outdoor activity at dawn and dusk when mosquitoes are most active.
- Call the Franklin County Mosquito BITE Line to report a problem in your neighborhood - 614-462-BITE(2483)



Mosquito Bits...

Mosquitoes are insects that live on almost every continent. There are over 2,600 different types of mosquitoes throughout the world. About 200 of these live in the United States.

Mosquitoes are considered pests due to the painful, swelling bites we experience after a mosquito bites us. However, mosquitoes can be a more serious problem because they also carry diseases to humans and animals alike.

Several species of adult mosquitoes serve as pollinators of several plants, including certain orchids.

All insects including mosquitoes have three basic body parts: head, thorax, and abdomen.

The head of a mosquito contains sensors that they use to find prey. Mosquitoes use three types of sensors to target prey: chemical, visual, and heat. They can sense carbon dioxide and lactic acid from about 100 feet away, which is normal for mammals and birds to excrete during breathing. In addition, mosquitoes can detect heat, therefore, if close enough they can easily find warm-blooded animals, including you.

What's in a Bite?

Once a female mosquito bites, she sucks your blood until her abdomen is full. The proteins from the insect's saliva cause an immune response from your body. The skin around the bite swells, producing a bump that itches. The swelling will subside, but the itch continues until your immune cells break down the mosquito's saliva proteins. Avoid scratching the bite; this will just further irritate your skin. Anti-itch creams such as Calamine Lotion or cortisone creams can give relief from the itching.