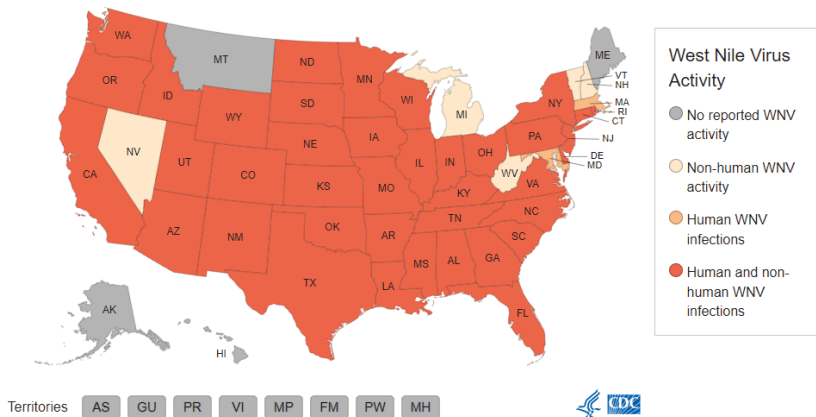


# WEST NILE VIRUS

## Mosquito-borne diseases information sheet

West Nile Virus (WNV) belongs to the virus family Flaviviridae and was first isolated in Uganda in 1937. Widely distributed in Africa, the Middle East, Europe, Russia and India it was first identified in the U.S. in New York City in 1999. Since then, it has become the most common mosquito-borne illness in the country. While most humans recover from WNV, it can be fatal or result in lifelong health issues.

## 2022 WEST NILE VIRUS ACTIVITY



### States with the highest incidence of human West Nile virus cases

Colorado (204)  
California (168)  
New York (79)  
South Dakota (66)  
Nebraska (64)

### States with the highest West Nile virus death toll

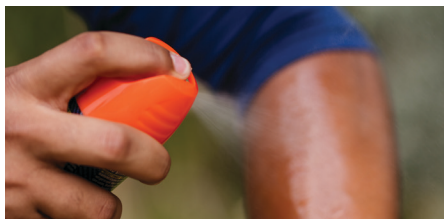
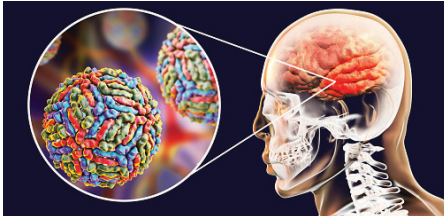
Colorado (18)  
California (11)  
Texas (7)  
Louisiana (6)  
Nebraska (4)  
Arizona (4)  
Illinois (4)

## DISEASE TRANSMISSION

- WNV is primarily spread through the bite of infected *Culex* spp. mosquitoes.



- WNV cases typically run from the summer and peak in early autumn.
- Birds serve as the amplifying hosts; over 300 bird species can be infected via mosquito bites, as well as consuming mosquitoes or other birds carrying the disease.
- 25 mammals and at least 2 reptile species are also susceptible to WNV.
- Reporting dead birds to your local government wildlife agency can help alert them to the presence of WNV.



## CHART/GRAPH OF CDC CASE COUNTS

Year	Total Cases	Deaths
2018	2,647	167
2019	971	60
2020	731	66
2021	2,695	191
2022	913	66

## SIGNS AND SYMPTOMS IN HUMANS

- Many people infected with WNV exhibit no symptoms or mild flu-like symptoms.
- Severe cases can cause disorientation, convulsions, vision loss, paralysis, or coma.
- In approximately 1 in 150 cases, the central nervous system is affected, resulting in encephalitis (inflammation of the brain) or death.

## TIPS TO REDUCE YOUR RISK OF INFECTION

- Use insect repellent.
- Be aware of peak mosquito hours. Peak mosquito hours for this species is late evening to nighttime hours.
- Wear clothing to protect yourself.
- Empty standing water.
- Install and repair window screens.

## HOW VDCI CAN HELP

VDCI offers comprehensive services that support government entities and businesses with education and reducing the risk of mosquito-borne disease. Visit [vdc.net](http://vdc.net) for more details on Integrated Mosquito Management (IMM) programs.



**Surveillance & Disease Testing**



**Data Collection & Reporting**



**GIS Mapping & Aerial Applications**



**Government Coordination & Public Education**



**Emergency Response & Freshwater Management**



**Regulatory Compliance**



Contact our experts at [admin@vdc.net](mailto:admin@vdc.net) or call **866.403.4111** so that they can help you develop a custom IMM program to meet your workplace's needs.